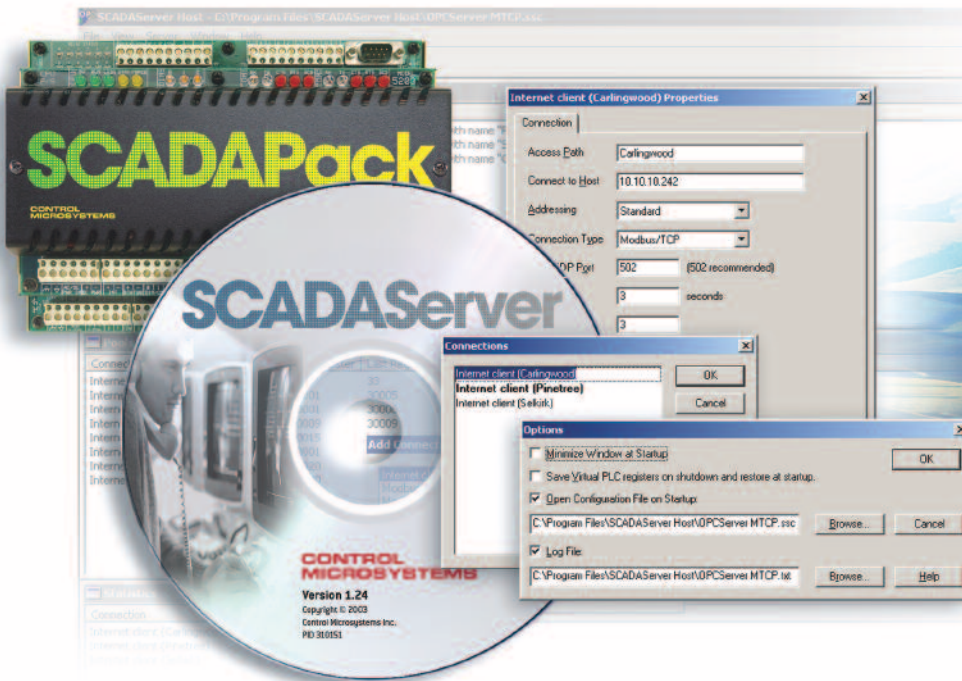


SCADA Server



Overview

Control Microsystems' SCADA Server software package is an OPC server that manages communication between host computers and a wide variety of products in a SCADA network.

Easy to use and flexible, SCADA Server supports LAN or serial connections with no flow control or RTS/CTS flow control. SCADA Server also supports dial-up serial ports and unsolicited (report-by exception) messages. SCADA Server allows SCADAPack programming tools to be used simultaneously as the SCADA network is being polled by the host computer.

SCADA Server can be used with any OPC client supporting custom interface version 1.0 and provides an easy solution for field communication between any Modbus device and custom applications written in Visual Basic or Visual C, or even Excel using Visual Basic for Applications.

SCADA Server supports all of the protocols found in the TeleBUS suite:

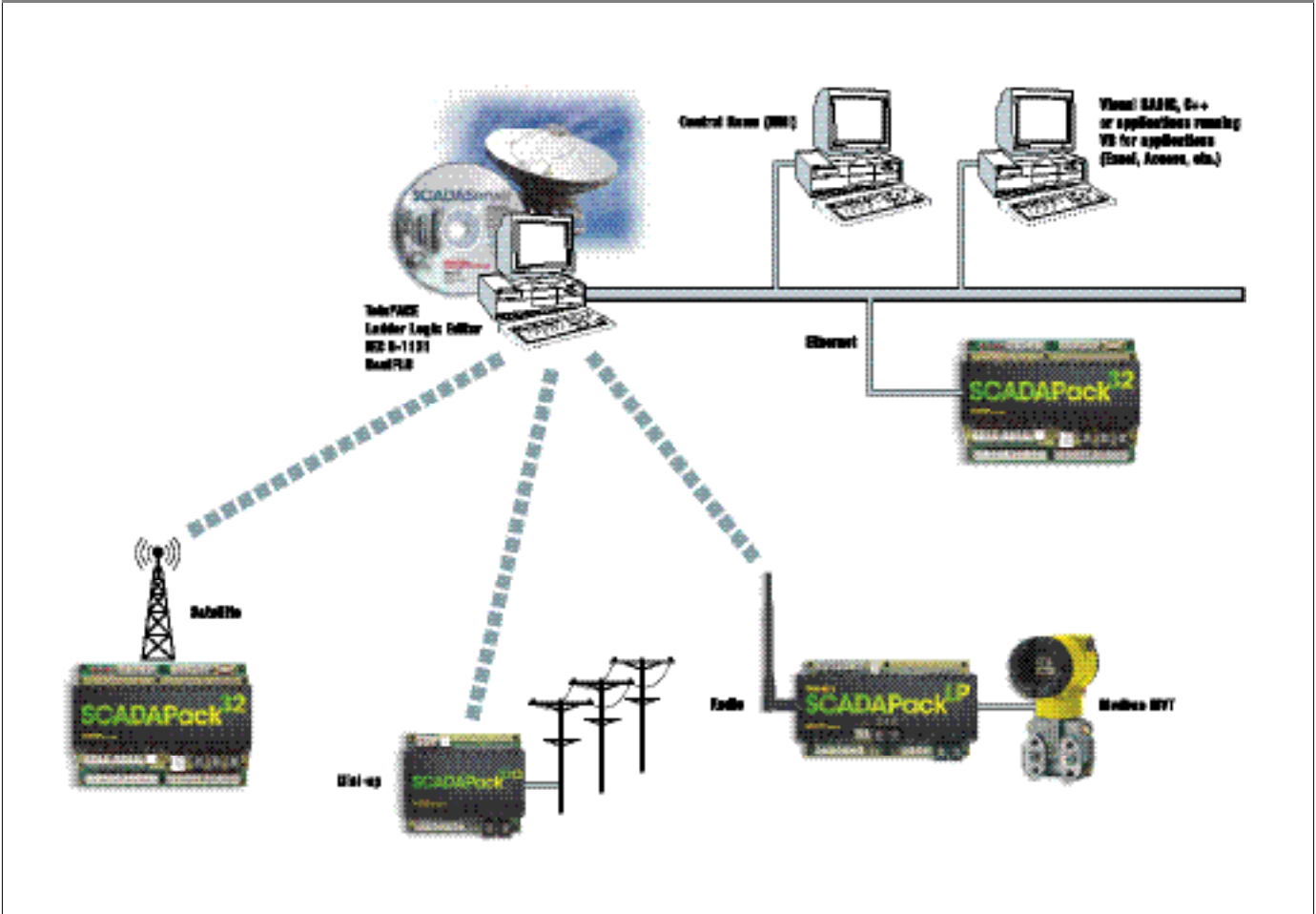
- Modbus RTU
- Modbus ASCII
- Modbus/TCP
- Modbus/UDP
- Modbus RTU in TCP
- Modbus RTU in UDP
- Modbus ASCII in TCP
- Modbus ASCII in UDP

SCADA Server Features:

- Allows multiple applications to share a single SCADA communication network or connection.
- Ideal for report by exception communications such as SCADA over Dial-up telephone. Modbus master devices can poll the virtual PLC's from the field. OPC clients poll the virtual PLC for exception reports from the field devices.

- Supports Half-Duplex (RTS/CTS flow control) and associated timing.
- Extended addressing option allowing addressing of up to 65534 field devices.
- Automation interface for use with client programs developed with Visual Basic including applications such as Excel incorporating Visual Basic for Applications.
- Custom interface version 1.0 for use with most HMI/SCADA Host software and OPC client programs developed in C/C++.
- Browsing of the server address space.
- DCOM support allowing access to SCADA data by multiple clients over the LAN.

Typical SCADA Network OPC



Custom Interface Version 1.0 OPC

Extended Addressing Up to 65534 Modbus devices

Automation Interface Use with Visual Basic applications, Excel, etc.

SCADA Server, SCADAPack Series, TelePACE, TeleBUS, RealFLO, SmartWIRE, SCADALog, RealPACK are all trademarks of Control Microsystems. All other trademarks are the property of their respective owners. All rights reserved.



CONTROL MICROSYSTEMS

www.controlmicrosystems.com